

---

# **Superform** ***Daily***

## **User Manual**

Superform Daily provides basic handicapping facilities to those who are already experienced in the methods of handicapping. All program design has been based on the premise that the system must be able to be operated by a person who has little, or no knowledge about computers.

Superform Daily is based on the popular Superform Online program and is designed to allow you to handicap a race with the minimum of complexity.

## Installation and Startup

Installation instructions, with this document and the software can be found at the Superform internet site <http://www.everyrace.com>

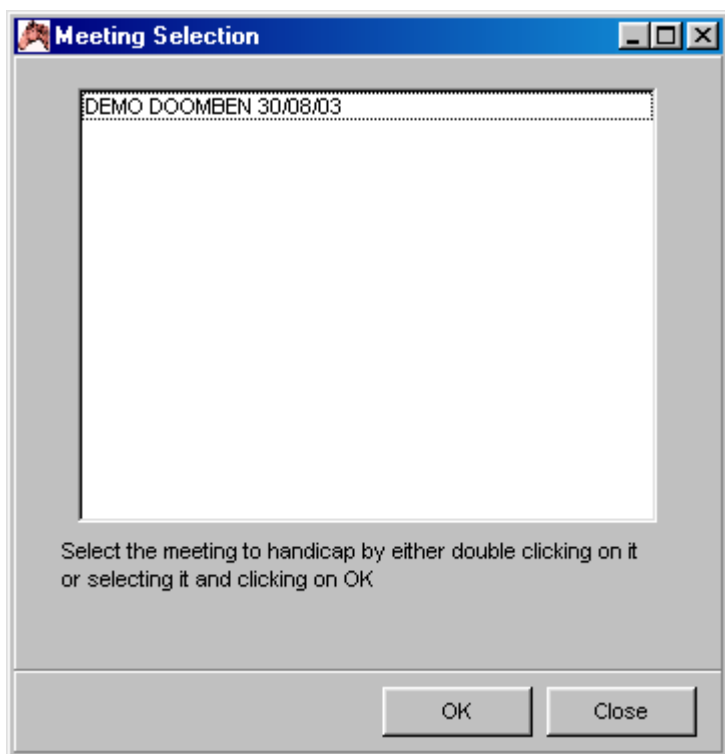
After installation there will be an icon on your desktop called Superform Daily. Double click on this icon to start the Superform Daily program.

When the program has started, the following screen is displayed.

The Handicap button allows you to handicap a meeting, the exit closes down the program.



After clicking on the Handicap button, the system will ask for the meeting to be handicapped. Meetings are downloaded from the Superform web site, [www.everyrace.com](http://www.everyrace.com). See the website for these instructions.



Once a meeting is selected, the handicapping screen is presented.

TAB	Name	Ex Pk	Base	Form	Cond	Cons	BP Adj	Own	JocRat	JAllow	WOL	FR	Margin	Pcent	Odds
1	SUNDIAL	60.0	56.0	2.0	.	.	.	.	5.5	3.0	6.5	49.0	3.0	10%	9-1
2	ALPINE EXPRESS	59.5	55.0	2.0	.	-0.5	.	.	4.5	3.0	5.5	49.5	2.5	11%	8-1
3	BUTCH WESTON	60.0	57.5	1.5	.	.	.	.	3.5	1.5	5.0	52.0	.	16%	5-1
4	HOW HIGH SIR	52.5	55.0	1.0	.	.	1.5	.	5.0	3.0	3.5	49.0	3.0	10%	9-1
5	MASINDOR	58.5	55.0	2.0	.	.	0.5	.	1.5	.	6.5	48.5	3.5	9%	10-1
6	CHENAR	54.0	50.0	.	.	.	1.0	.	2.5	.	3.5	43.0	9.0	2%	40-1
7	MIGHTY STRONGHO	49.5	51.5	.	.	.	1.0	.	3.0	1.5	2.0	47.0	5.0	7%	14-1
8	PANZER	51.0	50.5	1.0	.	.	.	.	5.5	3.0	2.0	47.0	5.0	7%	14-1
9	SPIRIT BREAKER	53.5	48.0	-1.5	.	.	.	.	4.0	2.0	1.0	43.5	8.5	3%	33-1
10	ASTRALOBE	52.5	49.0	1.0	.	.	.	.	3.0	.	3.0	44.0	8.0	3%	30-1
11	CANADIAN COURTIN	53.0	46.5	-1.0	.	.	0.5	.	2.5	.	3.0	39.5	12.5	1%	150-1
12	JUST AWE	48.5	40.5	3.0	.	.	.	.	2.5	.	3.0	38.0	14.0	0%	330-1
13	PREFERENTIAL	42.0	31.5	.	.	-1.0	.	.	3.0	.	3.0	24.5	27.5	0%	1000-1

**Features, Functions and Operation**

<b>1</b>	<b>Select A Race</b> - Click on the drop down arrow to display all current races. Select a race by clicking on the race line. If you have saved handicapping changes to this race before you will be presented with the Saved Race Option box. You will be given the option to either load the data that was previously saved, or you can load the race as was originally downloaded. In addition the <Load> <b>3</b> button allows you to revert to either a saved version or original version. See <b>3</b> following for a full description of the <Load> function.	
<b>2</b>	<b>Market Level Indicator</b> - Displays the percentage book value that the prices in the odds column of the Handicapping table <b>13</b> has been set to. You can reset this level by clicking the Market button <b>9</b> .	
<b>3</b>	<b>Load button</b> - If a race has been previously saved. You have the option to reload either the saved version or the original version of the race file. This facility is quite important as you may have made changes to the currently loaded race file and now wish to revert back to the original version.	
<b>4</b>	<b>Save button</b> - Will save the current race file with any changes.	
<b>5</b>	<b>Close button</b> - Closes the handicapping function and returns to the Superform <b>Daily</b> Main Screen.	
<b>6</b>	<b>All Form button</b> - Displays previous form for the currently selected horse. Double clicking a horse will also display the formlines for that horse.	Page 5
<b>7</b>	<b>Scratch button</b> - Scratches a runner. To scratch a horse, select the horse and click the <Scratch> button. A red line will be drawn through the runner's data line. Depending on the odds of the runner scratched the remaining runners will have their odds shortened. To unscratch a runner, select the scratched runner, and click the <Scratch> button.	
<b>8</b>	<b>Statistics button</b> - Displays wins/places/starts statistics by Course, Distance, Class and Track Condition for the current race being handicapped.	Page 6
<b>9</b>	<b>Market button</b> - This function allows the book value (market percentage) for the race to be set.	Page 7
<b>10</b>	<b>Print button</b> - Print handicapping screen.	Page 8
<b>11</b>	<b>Handicap tab</b> - Displays main handicapping information.	
<b>12</b>	<b>Field Details tab</b> - Displays extra handicapping information that doesn't fit on the main handicapping tab. Additional information includes form figures for last six starts, jockey name, trainer name, weight allocated and barrier position.	

Each piece of information in the handicapping table is separated into columns. Each column is described below in the order they appear in the handicapping table,

TAB	TAB number of the horse
Name	Name of the horse
Ex Pk	Expected peak - The horse's best rating last preparation adjusted for Weight For Age (WFA) improvement.
Base	Base run rating – The rating chosen for assessment purposes.
Form	Current form - A bonus or penalty reflecting the horse's current form pattern.
Cond	Condition - A penalty applied to the Expected Peak Rating for horses resuming.
Cons	Consistency – A penalty for inconsistency
BP Adj	Barrier position adjustment - A penalty for poor barrier position.
Own	Own rating - A bonus or penalty supplied by the user
JocRat	Jockey rating - A rating given to each jockey which measures his/her ability. The lower the number the more ability the jockey has.
JAllow	Jockey allowance – allowance claimed by an apprentice jockey.
WOL	Weight over the limit
FR	Final rating – the final or expected rating for each runner
Margin	Margin - The number of kilograms (kg – 1.5kg per length) each horse should finish from the assessed "winner".
Pcent	Percent – The percentage chance of the runner..
Odds	The minimum odds acceptable for each horse (based on predicted finish order and margins).

The All Form function allows runner specific form information to be displayed and used in the handicapping screen. The last 12 starts, plus the current, last, previous, wet and distance peak runs are displayed. Both the race rating (Rat) and the weight for age adjusted rating (WFArat) are shown.

**Previous Form**

**3. BUTCH WESTON 7G**                      Trainer : M J LAKEY                      Jockey : L.MORRISON

**Previous Form**

Crse	Date	Sot	Class	Dist	Rat	WfaR	Sts	Trn	Fin	Mgn	Wght	BP	Odds	Time	Jockey	JRat	Winner/2nd
ROCK	120803*	g	WFA	1000	57.5	57.5	6		1	0.4	57.5	4	4/13	0:57.85	A.Ware	5.5	MAO'S IMAGE
IPSH	190503	g	OPEN	1000	47.5	47.5	7	3	5	4.5	57.0	4	9/4	0:59.26	Z.Purton	1.5	OMNITRADER
ROCK	270403	g	OPEN	1000	55.5	55.5	10	8	2	0.1	58.0	10	9/2	0:57.31	D.Gay	3.0	KEEP COMING
CDRA	060403	d	OPEN	1000	42.0	42.0	12	4	6	7.9	58.0	11	15/4	1:00.16	S.Seamer	1.0	SILVER SWTCH
EFRM	150303	d	OPEN	1000	60.0	60.0	8	3	2	0.1	53.0	6	11/1	0:57.61	D.Gay	5.0	FEDERAL AGEN
EFRM	080203	g	OPEN	1200	49.0	49.0	11	3	11	7.3	55.5	11	25/1	1:10.81	M.J.Cahill	1.5	TREVISCAY
DOOM	270103	g	OPEN	1020	57.5	57.5	6	3	4	1.3	54.0	1	11/4	0:58.44	L.Morrison	4.0	SUNDIAL
ROCK	160103	g	OPEN	1000	56.5	56.5	8		1	0.8	60.0	4	5/2	0:56.66	A.Ware	5.5	APPREHENDED
DOOM	040103*	g	R-1MLY	1010	47.5	47.5	9	3	5	5.7	59.0	3	7/2	0:58.69	S.Seamer	1.0	AGGRAVATION

**Peaks**

	Crse	Date	Sot	Class	Dist	Rat	WfaR	Sts	Trn	Fin	Mgn	Wght	BP	Odds	Time	Jockey	JRat	Winner/2nd
<b>Curr</b>	ROCK	120803	g	WFA	1000	57.5	57.5	6		1	0.4	57.5	4	4/13	0:57.85	A.Ware	5.5	MAO'S IMAG
Last	EFRM	150303	d	OPEN	1000	60.0	60.0	8	3	2	0.1	53.0	6	11/1	0:57.61	D.Gay	5.0	FEDERAL AC
Prev	EFRM	060202	g	VLTR	1000	58.5	58.5	9	2	3	3.3	56.0	4	4/5	0:57.65	D.Gay	5.5	AXOLOTI
Dist	EFRM	150303	d	OPEN	1000	60.0	60.0	8	3	2	0.1	53.0	6	11/1	0:57.61	D.Gay	5.0	FEDERAL AC
Wet																		

**Double click on a rating to use as the new base rating** Close

By double clicking on the rating or WFA rating, the system will use that rating as the base rating on the handicapping screen.

Note : If the most recent run is not used as the base rating, the handicapping screen will clear the form bonus.

Displays the entire field’s race statistics. Statistics are provided in two parts, “Course, Distance, Class” and “Track Condition”. Both sets of statistics include information about a runner’s wins, places, starts, win percentage and place percentage. The field can be sorted by any of the column headings so quick identification of the best performing runners in order can be made whether it be by the raw number of wins or raw place strike rate.

Tab	Horse	Course					Distance (+/- 10%)					Course and Distance					Class									
		W	P	S	% W	% P	W	P	S	% W	% P	W	P	S	% W	% P	W	P	S	% W	% P					
1	SUNDIAL	3	1	5	60	20	7	7	25	28	28	3	1	5	60	20	0	0	0							
2	ALPINE EXI	5	4	20	25	20	7	12	41	17	29	4	3	14	29	21	0	1	2						50	
3	BUTCH WE:	1	1	8	13	13	10	8	31	32	26	1	1	8	13	13	0	0	1							
4	HOW HIGH	1	6	9	11	67	8	16	42	19	38	1	6	9	11	67	0	2	4						50	
5	MASINDOR	2	2	15	13	13	13	18	55	24	33	2	2	15	13	13	0	2	4						50	
6	CHENAR	4	1	14	29	7	7	6	31	23	23	4	1	11	36	9	2	0	2	100						
7	MIGHTY ST	1	2	12	8	17	7	8	35	20	25	1	2	11	9	18	0	1	1						100	
8	PANZER	0	0	2			7	3	16	44	19	0	0	1			0	1	2						50	
9	SPIRIT BRE	0	1	1		100	7	17	49	14	35	0	1	1		100	0	0	0							
10	ASTRALOBI	0	0				5	9	25	20	36	0	0	0			1	0	2	50						
11	CANADIAN	1	3	9	11	33	4	6	18	22	33	1	3	9	11	33	0	1	2						50	
12	JUST AWE	1	0	5	20		5	0	17	29		1	0	4	25		0	0	1							
13	PREFEREN	0	0	0			1	3	12	8	25	0	0	0			0	0	0							

**Course, Distance, Class Statistics**

This window shows statistics about the consistency of horses under certain race conditions which includes course, distance and class.

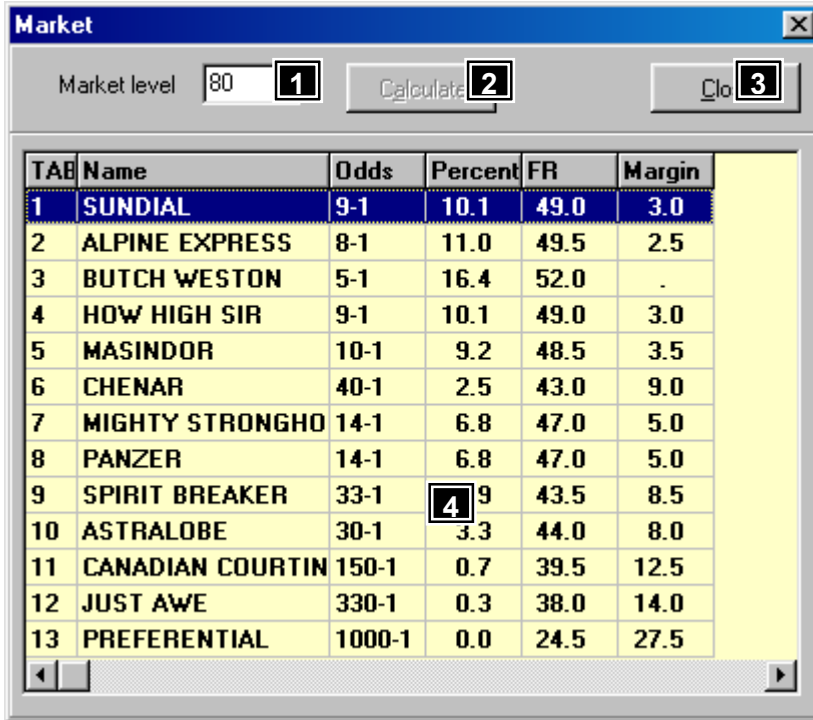
**Track Condition Statistics**

This statistics screen shows the performance of each runner by track condition.

**Features, Functions and Operation**

- 1 **Statistics tab** - Allows the statistics to be switched between “Course, Distance, Class” statistics and “Track Condition” statistics.
- 2 **Race header** - Displays race information.
- 3 **Statistics table** - Displays information about a runner’s wins, places, starts, win percentage and place percentage under certain criteria. Each column can be sorted by clicking on the column title. The currently sorted column is in red.
- 4 **Close button** - Closes the Statistics window and returns to the Handicap window

This function allows the setting of the book value (market percentage) for the race.



### Features, Functions and Operation

<b>1</b>	<b>Market level field</b> - Allows a new market level to be entered.	
<b>2</b>	<b>Calculate button</b> - Recalculates the market table <b>4</b> . Only becomes active after new value has been entered in the <Market level> field.	
<b>3</b>	<b>Close button</b> - Closes the Market window and returns to the Handicap window. Any changes are now reflected in the Handicap window.	
<b>4</b>	<b>Market table</b> - Displays the markets for all runners in the race. Double clicking(or press the <SpaceBar>) on a runner will remove that runner from the market.	

The Print function prints the information in the Handicap window for the whole meeting. When selecting the print option, the system will ask you to save your handicapping changes. You must save this information in order for the system to print it.

DEMO DOOMBEN 30/08/03															
Race: 1 B W S SURF BOAT				1350m				CL6							
TH	Name	ExPk	Brr	Form	Con	Cons	BpA	Own	JocR	JocA	WOL	FR	Mgn	%	Odds
1	IMIN HEAVEN	54.0	40.5	4.0	.	.	.	.	3.0	1.5	6.5	36.5	9.0	2%	40-1
2	KING SHALFORD	54.0	50.0	2.0	.	.	.	.	5.0	3.0	4.5	45.5	0.0	16%	11-2
3	SCENIC WELLS	52.5	46.0	1.0	.	.	.	.	2.5	.	4.5	40.0	5.5	6%	16-1
4	KIND SPIRITS	49.5	46.0	1.0	.	.	.	.	3.5	1.5	2.5	42.5	3.0	10%	9-1
5	NORTHERN FORCE	50.0	45.5	2.0	.	.	.	.	2.0	.	4.0	41.5	4.0	8%	12-1
6	GUNGADIN	47.0	48.5	1.0	.	-0.5	.	.	2.0	.	3.0	44.0	1.5	13%	7-1
7	PINK PONTIAC	46.0	44.5	1.0	.	-0.5	.	.	3.0	.	3.0	39.0	6.5	5%	20-1
8	MING'S FINALE	46.0	45.5	1.0	.	-0.5	.	.	2.5	.	3.0	40.5	5.0	7%	14-1
9	MALTESE LINER	52.5	48.5	2.0	.	.	.	.	2.5	.	3.0	45.0	0.5	15%	6-1
Race: 2 GILLETTE SURF ROWERS				1200m				FM-0MW							
TH	Name	ExPk	Brr	Form	Con	Cons	BpA	Own	JocR	JocA	WOL	FR	Mgn	%	Odds
1	CARISSIMA	47.5	46.5	1.0	.	.	.	.	4.5	3.0	4.0	42.0	0.0	14%	6-1
2	COTTONBRAE	49.0	45.5	2.0	.	-1.0	.	.	2.0	.	5.5	39.0	3.0	9%	11-1
3	MARMADAMAH	47.5	47.5	.	5.0	-1.0	.	.	2.0	.	5.0	34.5	7.5	3%	30-1
4	GORILLA'S	47.0	46.0	1.0	.	-0.5	.	.	3.5	.	4.0	39.0	3.0	9%	11-1
5	VOMORANA	47.0	45.5	1.0	.	.	.	.	2.5	.	4.0	40.0	2.0	10%	9-1
6	POSH TOUCH	43.5	41.5	2.0	.	-1.0	1.0	.	5.0	3.0	2.0	37.5	4.5	7%	14-1
7	SEA TIME	47.0	41.0	-0.5	.	-1.0	1.0	.	3.5	1.5	1.5	35.0	7.0	4%	25-1
8	TYCOON ROSE	40.0	42.5	1.5	.	.	1.5	.	4.5	3.0	2.5	38.5	3.5	8%	12-1